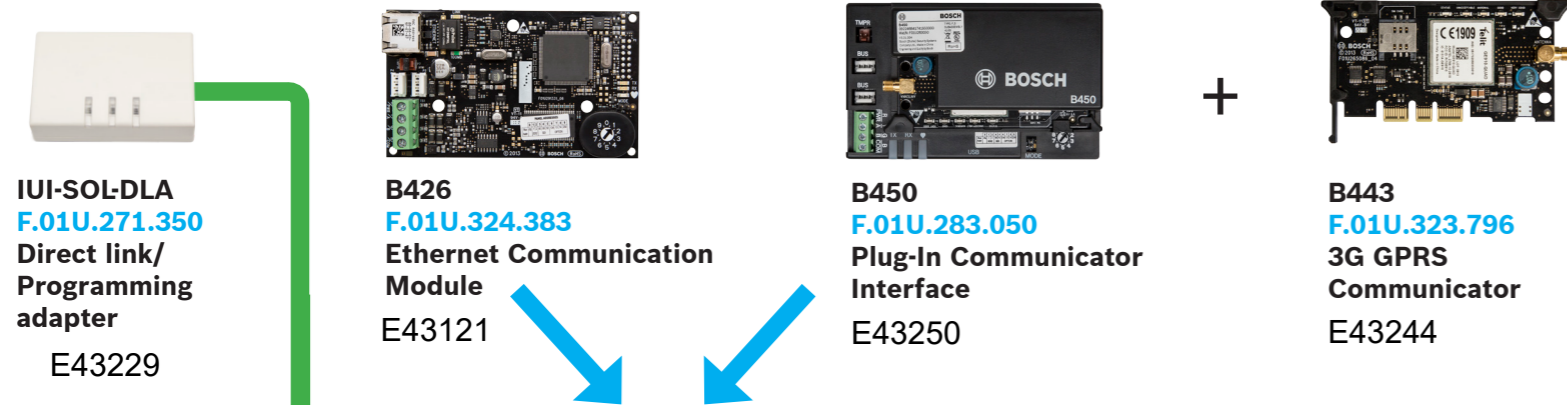
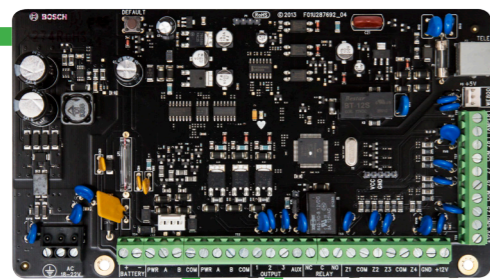


Up to 2 Communications Modules

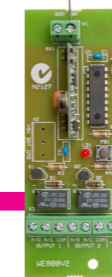


- E43119 **ICP-SOL2-P**
F.01U.292.968
Solution 2000
- E43116 **ICP-SOL3-P**
F.01U.292.967
Solution 3000



- PANEL FEATURES:**
- > 8/16 fully programmable zones
 - > 41 codes - 1 installers, 20 user codes, 20 RF keyfobs
 - > 16 wireless devices (on Solution 3000)
 - > Partitionable into 2 separate areas

WE800EV2
F.01U.271.805
Wireless Keyfob
Receiver
(available only for AU/NZ)



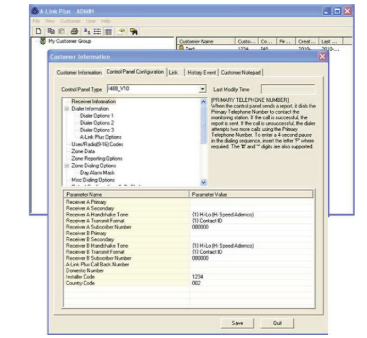
E43129



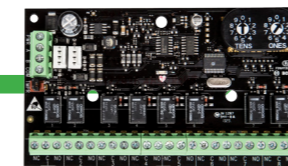
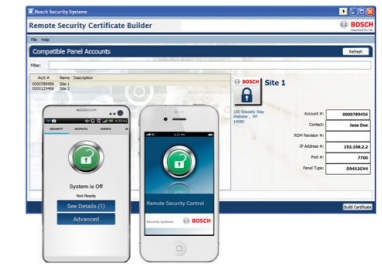
HCT-4
F.01U.271.582
Button Premium
Keyfob
(available only for AU/NZ)

E43136

A-Link Plus Software



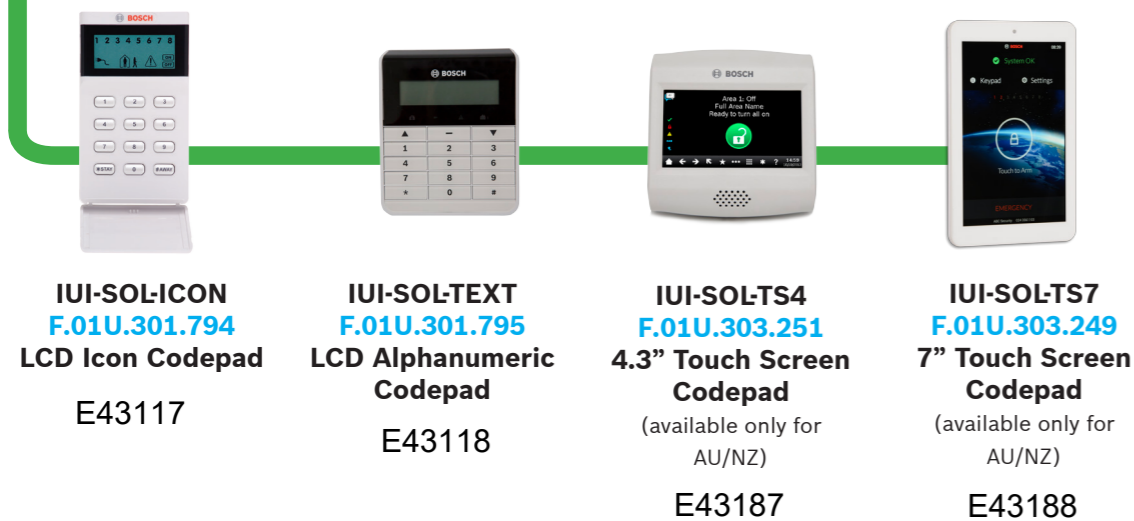
Certificate Builder



B308
F.01U.323.802
SDI2 8 Output
Expansion Module
(Up to 2 Per System)

E43189

Up to 4 Codepads



Solution 3000 Only

