

FES10 SERIES

COMPACT ELECTRIC STRIKE



The FES10 Series electric strikes are designed for light commercial and residential applications. With a small ANSI footprint, the strikes accept either 12 or 24VDC and have been tested to a 2-hour fire rated in accordance with AS 1530.4:2005 (contact Allegion for more details).

The strikes are easily Power To Lock (PTL) / Power To Open (PTO) field interchangeable by simply changing over the barbell mechanism. The device is pre-drilled to cater for extension lips, comes with a 5 year warranty and has a holding strength of up to 1200kg.

The FES10M version has Door Status Sensor monitoring. The FES10 is weather resistant to IP56 standard.

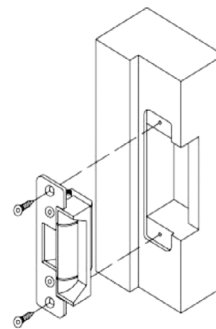
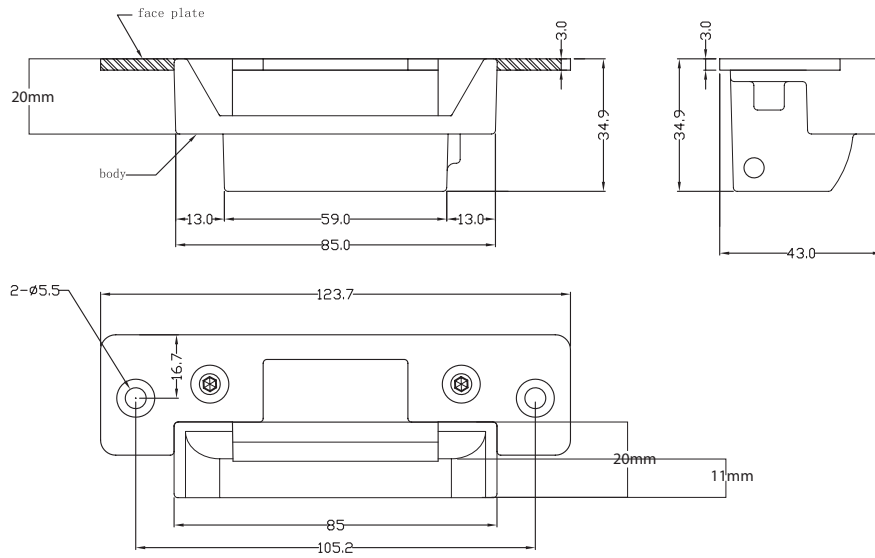
Technical Details

| | | |
|------------------|--|---------------|
| Part No. | FES10M | FES10 |
| Function | Mortice mount, Power To Lock (PTL) / Power To Open (PTO) field interchangeable | |
| Holding Strength | Up to 1000kg | |
| Voltage/Current | Dual Voltage 12VDC/24VDC. 200mA @ 12VDC. 100mA @ 24VDC | |
| Approvals | Up to 4-hour fire rated in accordance with AS 1905 (contact Allegion for more details) CE/△ | |
| Monitoring | Door latch monitoring | Non monitored |
| Dimensions | L= 125 x W= 42 x D= 35mm | |

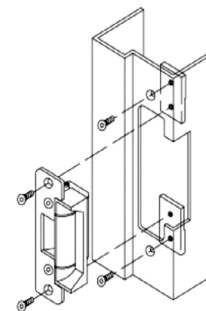
Product Features

- Stainless steel faceplate and keeper
- Barbell mechanism for simple change of locking function
- Low power consumption
- Compatible with door latch depth of up to 15mm
- Superior holding strength of up to 1000kg
- 5 year warranty
- 12 or 24VDC operation
- Pre-drilled for extension lips
- CE/△

Product Dimensions and Installation



Mounting Installation on wooden door frame



Mounting installation on metal, aluminium or PVC door frame

Product Codes & Accessories

| Part No. | Product Description |
|------------|--|
| FESI0M | ELECTRIC STRIKE ANSI FOOTPRINT MONITORED |
| FESI0 | ELECTRIC STRIKE ANSI FOOTPRINT NON-MONITORED |
| FESI0-EL15 | FESI0 EXTENSION LIP 15MM |
| FESI0-EL25 | FESI0 EXTENSION LIP 25MM |
| FESI0-EL50 | FESI0 EXTENSION LIP 50MM |
| FESI0-EL75 | FESI0 EXTENSION LIP 75MM |